

iCigar Pro DCH-67
We Care About Quality in Cigars

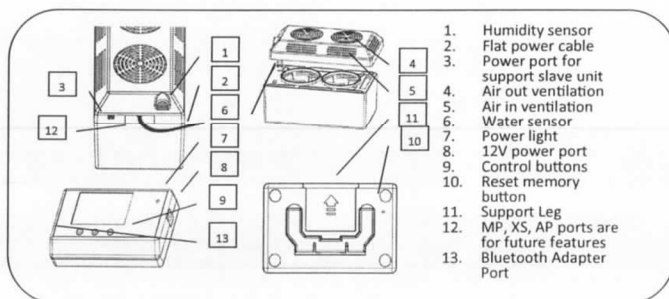
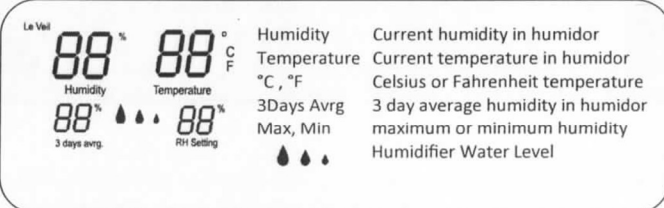
Humidifier Instructions

Thank you for purchasing this Le Veil product: Please read this manual in its entirety to fully enjoy the benefits and features of this product. Please keep this manual for future reference.

Note: A clear film is applied to the top screen face that can be removed prior to using this product. Locate the clear tab and simply peel to remove

- Low water alarm indicator
- Maintains up to 55 CB-FT humidors
- Up to 110 CB-FT w/sub. tank (not included)
- Two Powerful and quiet fans
- Back-lit liquid crystal display

Note: A clear film is applied to the top screen face that can be removed prior to using this product. Locate the clear tab and simply peel to remove.



Recalibrating the Hygrometer

Each Le Veil humidifier is equipped with a capacitive humidity sensor, the same used in commercial laboratories. Most digital hygrometers available are equipped with resistive sensors which can have a RH variance of +/- 10%. Please make sure the hygrometer used to match humidity has a capacitive humidity sensor.



To calibrate the iCigar Pro humidifier, hold the 'MODE' button (keep holding it) and before the numbers flash in the bottom right corner, immediately adjust the meter with the 'UP' and 'Down' buttons. The numbers on the upper left side of the humidifier will increase or decrease depending on what you need. Use this function to match the humidifier to the other hygrometer that you are trying to match it to.

Warnings

- Avoid having water near any electric connection. Make sure the power plug is dry before plugging it into any power outlet.
- Please do not use tap water in humidifier units. Tap water will cause damage to humidifiers, humidors and cigars.
- Make sure there is gel in the tank. If you would like to use without gel, don't use distilled water because the water sensor will not detect water since distilled water is too pure, instead use carbonated filtered drinking water.
- If the Flat Cable needs adjusting, follow the provided instructions to avoid damaging it.
- If lime build up is seen on the two water sensor poles, clean with de-lime or vinegar. Make sure no liquid gets into the humidifier.

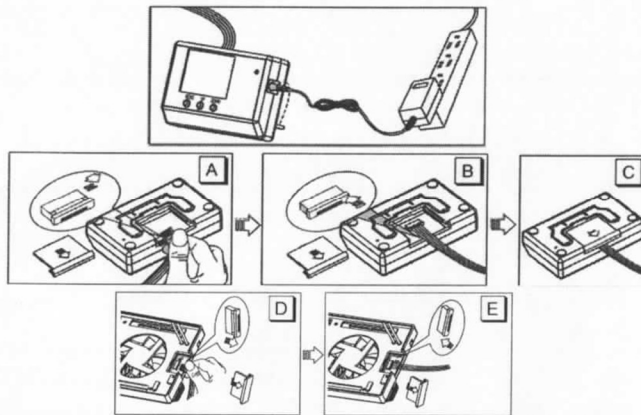
Factory Pre-set	70%
Humidifier Accuracy	+/- 1%
Humidity Range	40%-90%
Wall Outlet Power	100-240V AC, 12V DC
Size	9"Lx4 3/4"Wx4 1/2"H

Engineered in USA
Manufactured in China
Patent rights issued
and /or pending

www.leveil.us

Connection Information

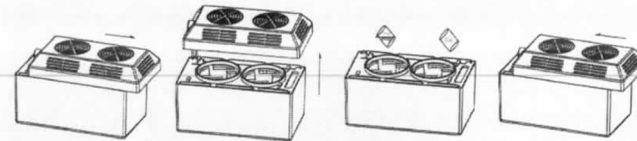
*** The Flat Cable that connects the Main Controller to the Water Tank is attached at the factory. This cable is fragile and may tear easily. The following instructions are how to connect the Flat Cable to avoid any damage. ***



To connect the cable to the Main Controller unit, follow these instructions

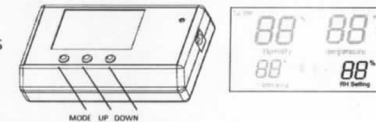
- Open the back cover on the Main Controller unit and gently extend the cable lock out to plug in the Flat Cable head. The cable should have the blue side facing up and be positioned in the center.
- Push the cable lock in to secure the Flat Cable head.
- Replace the back cover.
- Open the back cover on the fan enclosure and pull the cable lock out to plug in the Flat Cable head. The cable should have the blue side facing up and be positioned in the center.
- Push the cable lock in to secure the Flat Cable head and replace the back cover.

Water Tank Setup



- Pour the bag of dry gel into the water tank.
- Add distilled or carbon filtered drinking water into the water tank, filling to the water line. (Overfilling the water tank may cause ventilation issues and short circuits)
- Wipe off any excess water on the inside and outside of the fan unit.
- Place the cover back on the water tank as shown above. Allow 20 minutes for the gel to absorb water before use.
- Replace gel yearly.

Initial Setup and Operations



- Press and hold the 'MODE' button for 3 seconds until the RH setting numbers flash in the bottom right of the screen.
- Release the 'MODE' button and use the 'UP' and 'DOWN' buttons to raise or lower the target humidity/RH setting.

- * The humidifier fan will turn on and off depending on what the RH setting is set to.
- * Quickly press 'MODE' to switch from °C or °F.
- * Press 'UP' or 'DOWN' to display the Max/Min humidity.
- * When the water level becomes low, the LCD display will show 1 water drop and beep for 30 seconds. Push any button to turn off the alarm early.
- * Fill the tank to the water line using distilled water. Overfilling may cause ventilation issues and short circuits.